

# Streck ARM-D<sup>®</sup> Kit Quick Start Guide For Use on the ABI QuantStudio<sup>™</sup> 5 (QS5) Real-Time PCR System

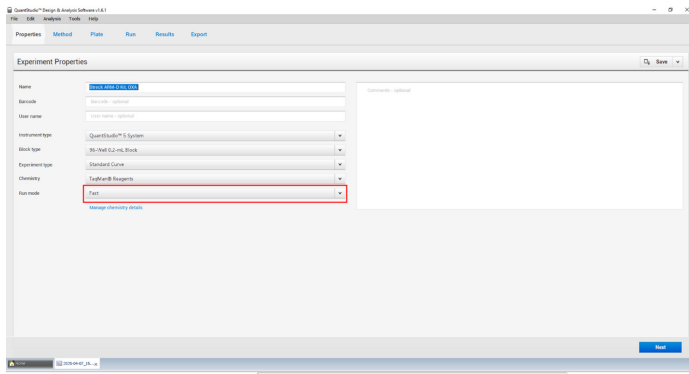
Streck ARM-D Kits (RUO) are for Research Use Only. Not For Use in Diagnostic Procedures. CE and IVD versions of these kits are also available. These kits are for Export Only. Not for sale in the U.S.

Prior to running the Streck ARM-D<sup>®</sup> Kits, please review the product documentation located at [streck.com](http://streck.com):

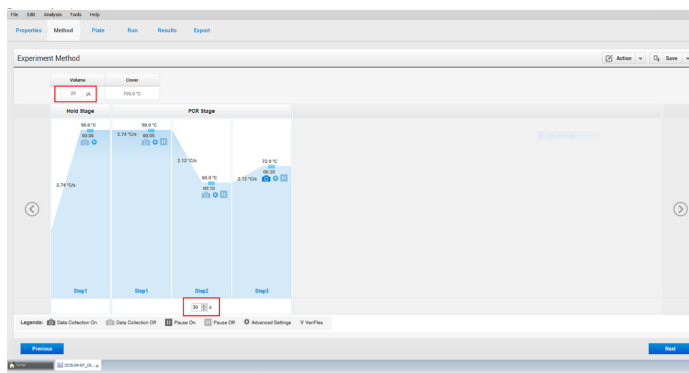
- Instructions for Use (IFU)
- Data Acquisition and Analysis Guides – instrument-specific
- Frequently Asked Questions (FAQ)

## ARM-D Kit Settings for QuantStudio 5

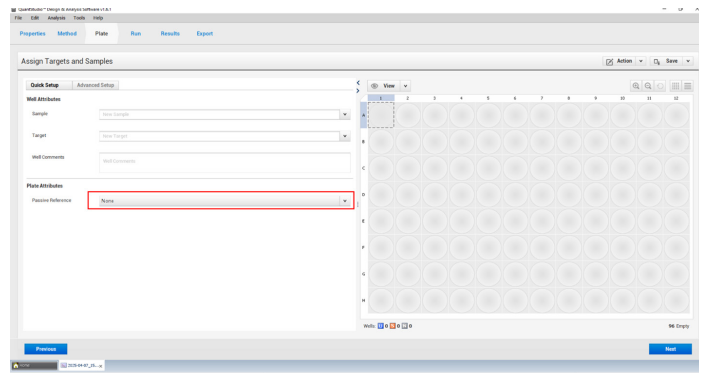
1. Select Create New Experiment.
2. Under Properties, change Run Mode from 'Standard' to 'Fast'.



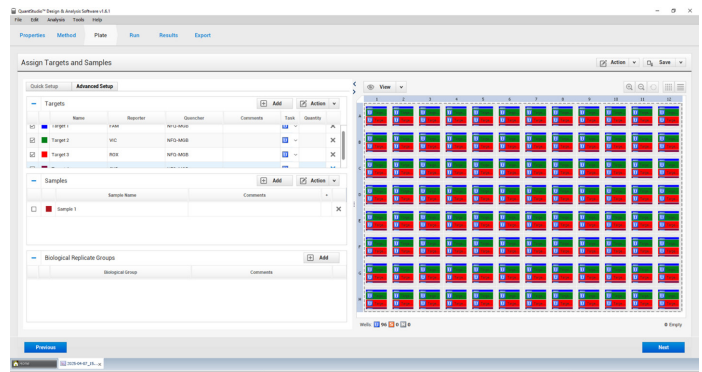
3. Under Method,
  - a. Set reaction volume to 25  $\mu$ L.
  - b. Use the cycling protocol as listed in the IFU:



4. Under Plate Attributes, Change Passive Reference to 'None'.



5. Under Advanced Setup, select the following dyes:
  - a. FAM
  - b. VIC
  - c. ROX or JUN
  - d. CY5



6. To analyze data following completion of the run, set thresholds in the linear phase of exponential amplification above background signal. If needed, adjust the baseline end cycle to approximately 3 cycles prior to the earliest amplification signal.

Contact **Streck Technical Services** for assistance at **800.843.0912** or [technicalservices@streck.com](mailto:technicalservices@streck.com).

All trademarks are property of their respective owners.