



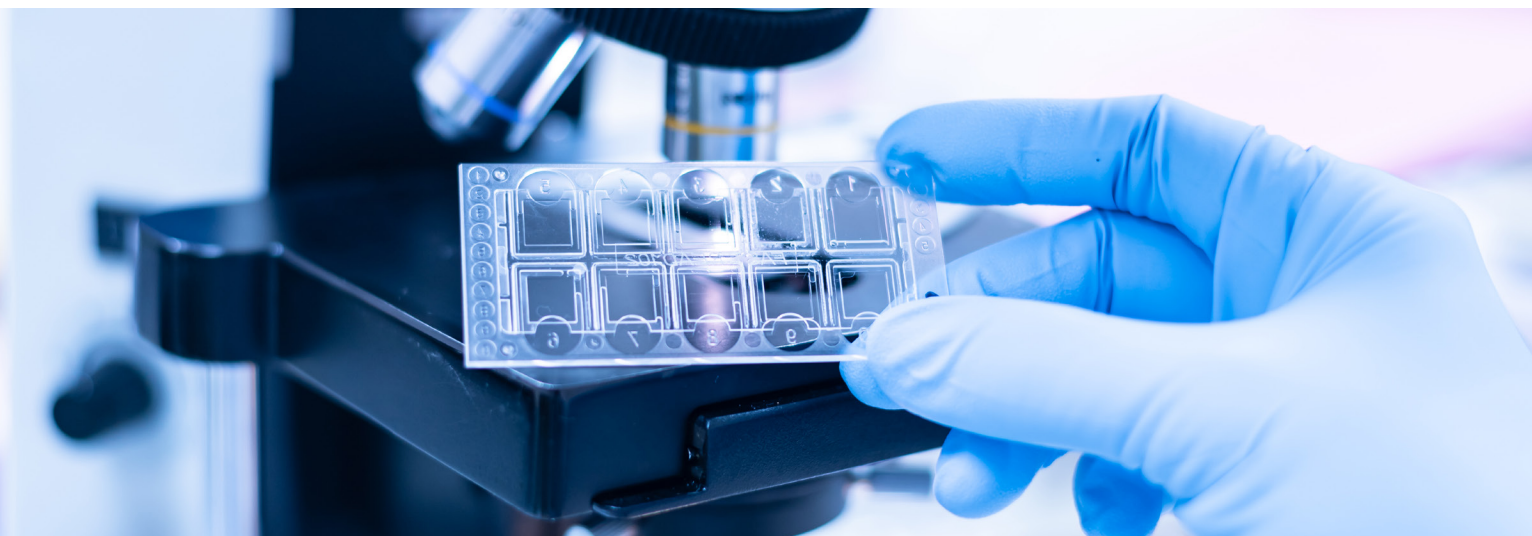
STRECK

streck.com



Cell-Chex[®]

Manual procedural control for cerebrospinal and body fluid testing

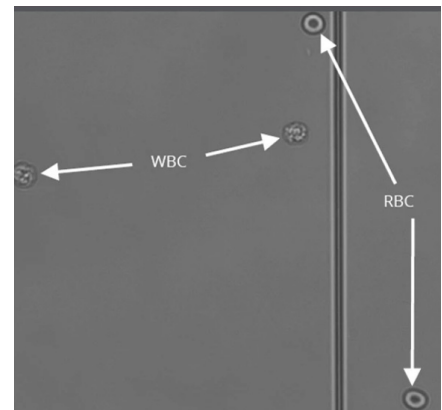


Address the 3 Cs of manual body fluid QC with Cell-Chex®

Counts

QC Need: Accurate RBC and WBC counts from patient sample.

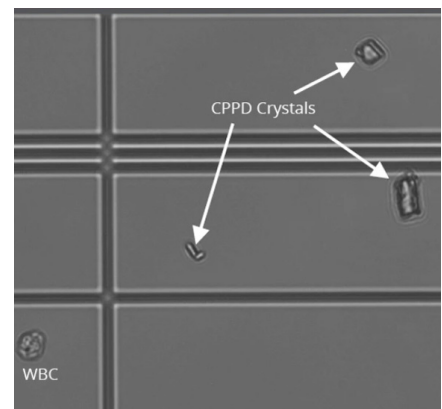
How Cell-Chex Solves It: Cell-Chex contains biconcave RBCs and five types of morphologically distinct WBCs. These cells are easy to differentiate and have morphology representative of fresh patient samples, unlike other body fluid controls on the market. This ensures accurate and precise counts using hemacytometers.



Crystals

QC Need: Ability to identify crystals in synovial fluid samples.

How Cell-Chex Solves It: Cell-Chex is the only manual body fluid control that contains crystals. They can be easily identified without interfering with RBC and WBC counts using a hemacytometer or WBC differential counts using a cytocentrifuge. Real CPPD and urate crystals can be accurately differentiated based on morphology and polarized light microscopy.



Competencies

QC Need: A control that meets CAP quality requirements.

How Cell-Chex Solves It: Cell-Chex validates the entire cell qualification and quantification procedure. The multi-level control has a long shelf life to reduce the number of shipments and associated costs.



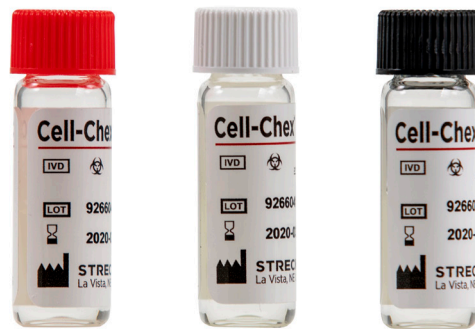
Body fluid testing can provide important insight into patient health, but only if the methods and results are effective and accurate.

Do you feel confident in the control you are using?

Cell-Chex® is a multi-level manual cerebrospinal and body fluid control for evaluating the accuracy and precision of hemacytometer RBC and WBC counts, urate and CPPD crystal identification and manual WBC differential procedures.

Here's why it's a good fit for your lab:

- + Validates the entire cell qualification and quantification procedure
- + Resembles a patient sample
- + Easily incorporates into sample preparation protocols



SelectScience® 22 YEARS
The Fastest Way to Expert Opinion™ Advancing Scientific Communication

“This is an assayed hemacytometer control for manual cell counts. Works great!”

Rating: 4.3 ★★★★★

Application Area: Hematology

“Great product. We needed to start running a hemacytometer/ cytocentrifuge control for manual cell counts and differentials. This is now required by our accrediting agency. We are pleased with the ease of use and assayed values that ensure our technical staff is performing testing accurately.”

Review date: 16 Dec 2021 | Streck

About Streck

Established in 1971, Streck develops quality control and sample stabilization products that help clinical and research laboratories feel confident in the validity of their results. Streck products are manufactured in La Vista, Nebraska, and delivered to thousands of labs worldwide.

Ordering Information

| Description | Catalog Number |
|-----------------------------|----------------|
| 3 x 2.0 mL L1-UC, L1-CC, L2 | 212431 |
| 2 x 2.0 mL L1-CC | 212429 |
| 6 x 2.0 mL L1-CC | 212430 |
| 4 x 2.0 mL L1-UC, L2 | 212420 |
| 6 x 2.0 mL L2 | 212424 |
| 12 x 2.0 mL L1-UC, L2 | 212425 |
| 6 x 2.0 mL L1-UC | 212432 |

Domestic Sales

800.843.0912

salesinquiry@streck.com

Customer Service

800.228.6090

custserv@streck.com

Technical Services

402.691.7510

800.843.0912

Fax: 402.691.7518

technicalservices@streck.com

See streck.com/patents for patents that may be applicable to this product.

