

ESR-Auto Plus® and ESR-657 Mixer Dismantling Guideline
Jan. 2009, 880010-1

SOURCE: Streck

Information in this guideline is subject to change without notice. No part of this publication may be reproduced or distributed in any form or by any means, electronic or mechanical, for any purpose, without the express written permission of Streck. Streck provides this guideline for qualified technicians who must dismantle the ESR-Auto Plus and/or ESR-657 Mixer.

TRADEMARKS

Streck brand and product names are service marks, trademarks or registered trademarks of Streck in the United States and other countries. All other marks are the property of their respective owners.

DISCLAIMER

The products and specifications, configurations, and other technical information regarding the products contained in this guideline are subject to change without notice. All the statements, technical information, and recommendations contained in this guideline are believed to be accurate and reliable but are presented without warranty of any kind, and users must take full responsibility for the application of any products specified in this guideline. In no event shall Streck or its suppliers be liable for any indirect, special, consequential, or incidental damages, including, without limitation, lost profits or loss or damage to data or property arising out of the use or inability to use this guideline, even if Streck has been advised of the possibility of such damages.

SPECIAL INSTRUCTIONS

Streck emphasizes the importance of following all procedures described in this guideline, to prevent personal injury. The user should pay careful attention to sections that contain the following:



Note: Information presented in this format is very important in the associated context. Please pay particular attention to text conveyed as a Note.



Warning: Information presented in this format identifies a potentially dangerous situation involving electrical circuitry. Use the advice in this text to avoid bodily injury.



Special Handling: Information presented in this format indicates special care must be applied when disposing or recycling the component.

CONTACT INFORMATION

If you have questions regarding our products you can contact us directly:

Streck Technical Services
+1.402.333.1982

Streck
7002 South 109th Street
Omaha, NE USA 68128

ESR-Auto Plus® and ESR-657 Mixer Dismantling Guideline
Jan. 2009, 880010-1

CONTENTS

ESR-Auto Plus Dismantling Instructions

General Preparation..... 1
Main Cover Removal..... 1
LED / Photo Eye Board Removal..... 2
Main Board, Position LED Board Removal..... 3
Printer Board Removal..... 4

ESR-657 Mixer Dismantling Instructions

General Preparation..... 5
Power Cord / Adapter Removal 5

ESR-Auto Plus® and ESR-657 Mixer Dismantling Guideline
Jan. 2009, 880010-1

GENERAL PREPARATION: ESR-Auto Plus Analyzer

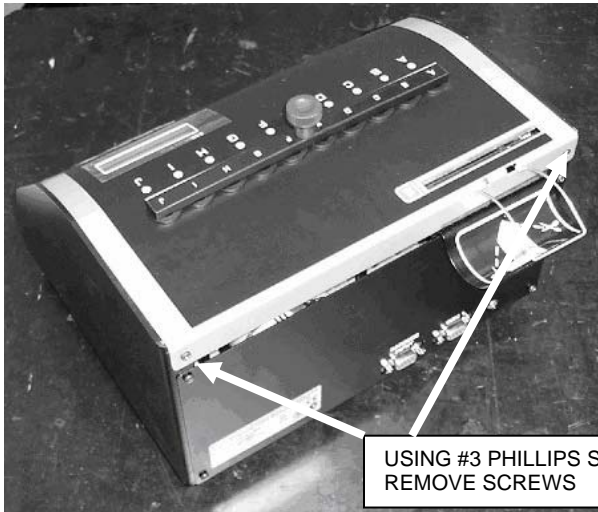
TOOLS REQUIRED

- #3 Phillips Screwdriver
- #4 Phillips Screwdriver
- 5.5mm Nut Driver
- Wire Cutters

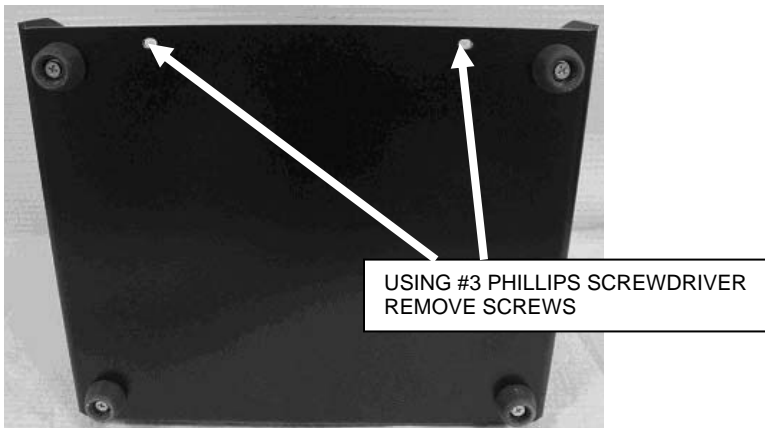


Disconnect power supply and all other components connected to ESR-Auto Plus.

MAIN COVER REMOVAL



Turn ESR-Auto Plus upside down and remove the following screws.

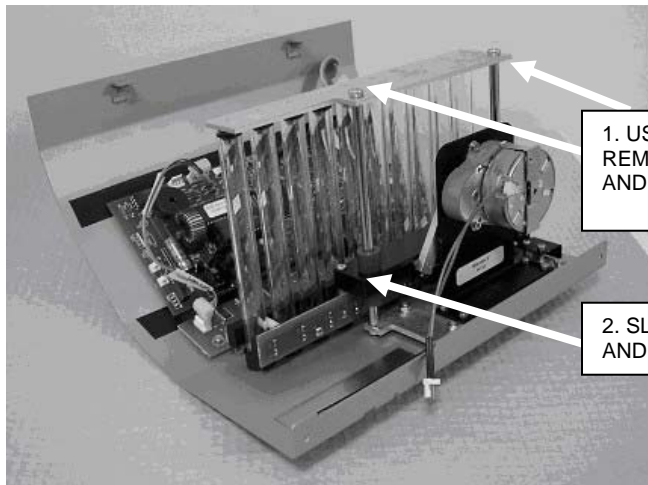
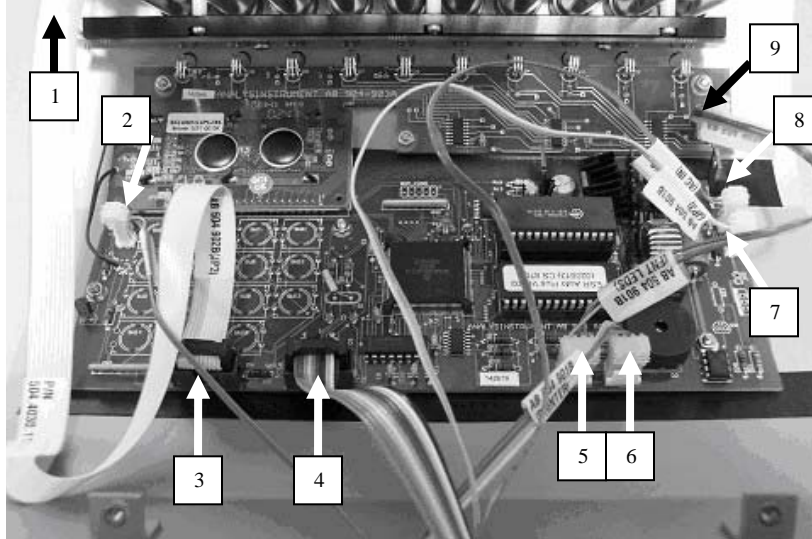


Note: Set the ESR-Auto Plus back on the work surface and gently lift the cover off the base, turn cover upside down and set cover into base.

ESR-Auto Plus® and ESR-657 Mixer Dismantling Guideline
Jan. 2009, 880010-1

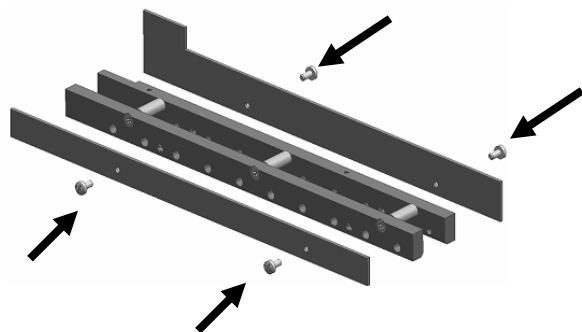
LED/PHOTO EYE BOARD REMOVAL

Disconnect all 9 connections.



1. USING #4 PHILLIPS SCREWDRIVER REMOVE SCREWS. REMOVE PLATE AND GUIDE TUBES.

2. SLIDE SHUTTLE ASSEMBLY OFF AND REMOVE BOARDS

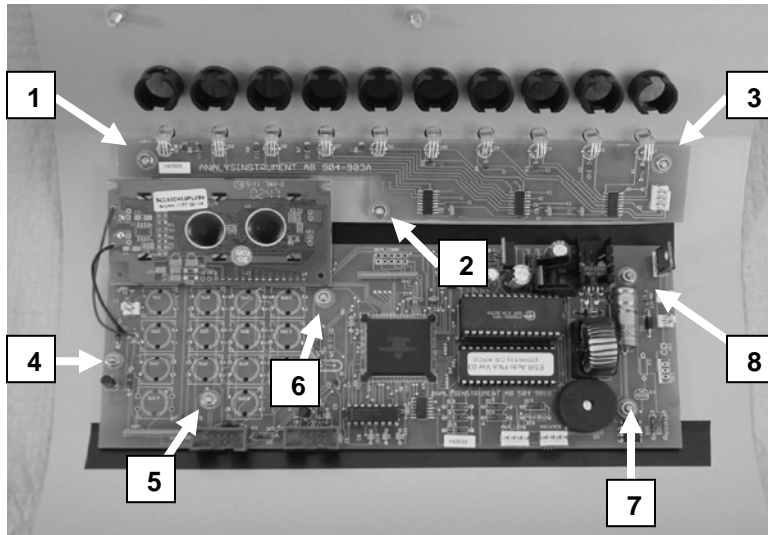


3. USING #3 PHILLIPS SCREWDRIVER REMOVE SCREWS AND CIRCUIT BOARDS

ESR-Auto Plus® and ESR-657 Mixer Dismantling Guideline
Jan. 2009, 880010-1

MAIN BOARD, POSITION LED BOARD REMOVAL

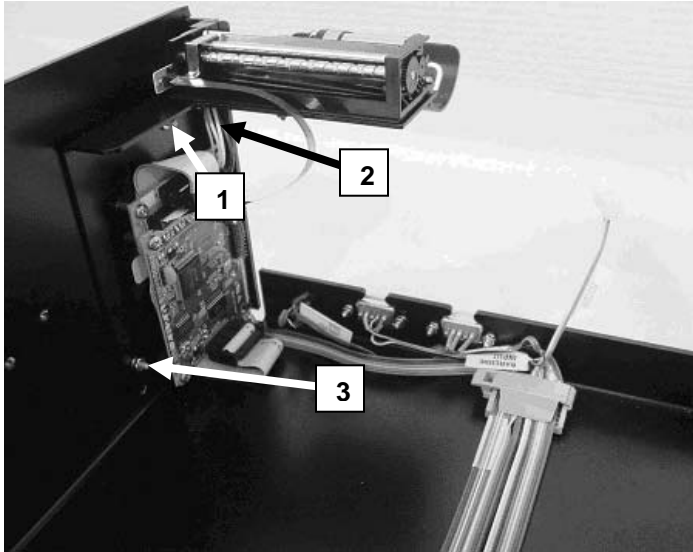
Using a 5.5mm nut driver, remove 3 nuts from the position LED board (#1-3) and 5 nuts from the main board (#4-8).



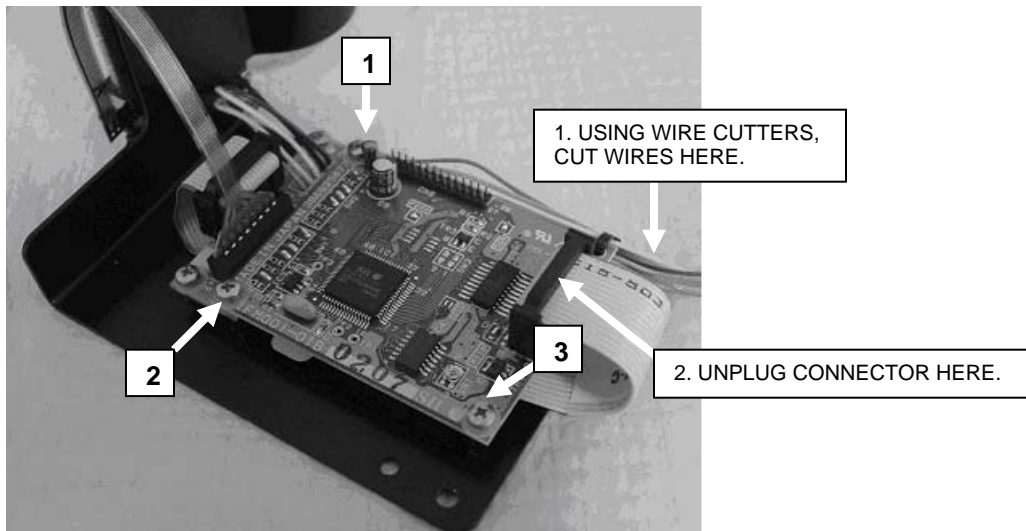
Note: Carefully remove the position LED board and the main board. These boards may have sharp edges.

PRINTER BOARD REMOVAL

Using a 5.5mm nut driver, remove 3 nuts from the printer bracket (#1-3) and remove printer bracket.



Using #3 Phillips screwdriver remove 3 screws (#1-3).



Properly recycle or dispose of all circuit boards and power supply adapters.

ESR-Auto Plus® and ESR-657 Mixer Dismantling Guideline
Jan. 2009, 880010-1

GENERAL PREPARATION: ESR-657 Mixer

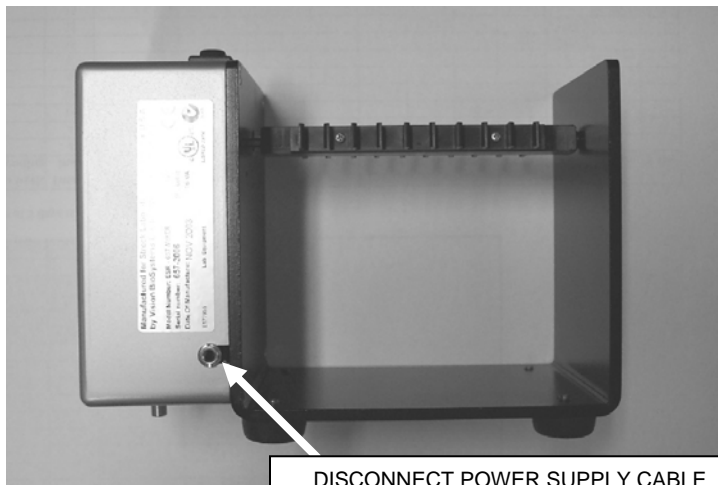
TOOLS REQUIRED

No tools required



Disconnect power supply from ESR-657 Mixer.

POWER CORD REMOVAL



Properly recycle or dispose of power cord and adapter.