

# Cyto-Chex<sup>®</sup> BCT

Immunophenotyping Preservative



Cyto-Chex BCT is a direct-draw blood collection tube for the preservation of whole blood specimens. The preservative contained in Cyto-Chex BCT minimizes the adverse effects that time, storage and transport conditions can have on sample integrity. Cell morphology and cellular antigen expression are maintained for up to 7 days.

## Cell Stabilization

Preserve patient samples for immunophenotyping by flow cytometry for up to seven days.

- stabilizes white blood cell antigens, including those of the HIV panel of CD markers
- reliable and accurate CD4 counts are assured for up to seven days
- preserves white blood cell antigens allowing subsets of leukocytes to be distinguished by flow cytometry analysis

## Transport

Maintain sample integrity during transport from sample collection site to central analysis location.

- Cyto-Chex BCT is FDA-cleared for the collection, transport and storage of blood samples from HIV-infected individuals
- transport to reference laboratories
- transport of samples during clinical trial studies
- sample analysis in resource-poor areas of the world

## Batching

Samples collected in Cyto-Chex BCT can be held/batched for up to seven days prior to analysis, improving the efficiency of your laboratory by:

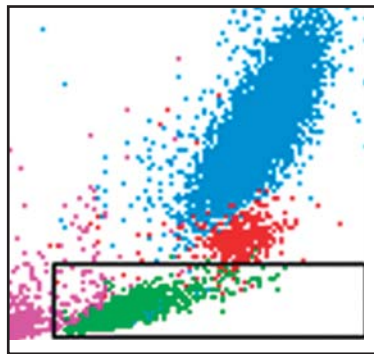
- reducing valuable labor time
- eliminating weekend and late shift work
- reducing daily flow cytometry start-up costs
- reducing the need for patient redraws

## Description

## Catalog #

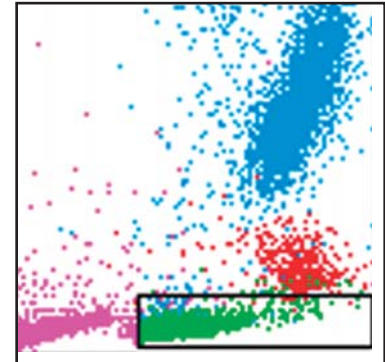
6 Vials (5ml) . . . . .	213361
25 Vials (5ml) . . . . .	213362
100 Vials (5ml) . . . . .	213386

EDTA - 6 Hours



FSC

Cyto-Chex BCT - 7 Days



FSC

## Supporting Data

Light scatter profiles from a blood sample drawn into a K<sub>3</sub>EDTA tube analyzed at six hours compared to data from a blood sample from the same patient drawn into Cyto-Chex BCT analyzed at seven days.

800.843.0912  
www.streck.com

**Streck**

Clinical Laboratory Products You Can Count On.

# Streck Flow Cytometry Products

## Cell Stabilization

### Streck Cell Preservative™ and Cyto-Chex® BCT\* CE

Preserve valuable samples for up to seven days by eliminating the adverse effects of time and storage and transport conditions on sample integrity.

## Controls

### CD-Chex® Plus\* and CD-Chex® Plus BC\* CE

Whole blood positive procedure controls for monitoring immunophenotyping by flow cytometry. Available in two clinically relevant levels of CD4. Assayed for the most common lymphoid and myeloid CD markers.

### CD-Chex® CD 34\* CE

Whole blood process control for evaluation and enumeration of CD34 positive cells.

## Sheath Fluid

### Streck Cytometry Sheath

A balanced electrolyte solution for use as a sheath fluid for flow cytometry. Available in 20 liter Cubitainers®.

Product	Packaging	Catalog #
<b>Cell Stabilization • Streck Cell Preservative™</b> (formerly labeled as Cyto-Chex®)		
Streck Cell Preservative	6 x 1.0ml	213350
Streck Cell Preservative	24 x 1.0ml	213352
Streck Cell Preservative	50 x 1.0ml	213355
<b>Control • CD-Chex® Plus</b>		
Glass Vials		
CD-Chex Plus	1 x 2.5ml	213325
CD-Chex Plus	2 x 2.5ml	213326
CD-Chex Plus	5 x 2.5ml	213327
CD-Chex Plus	8 x 2.5ml	213333
CD-Chex Plus CD4 Low	1 x 2.5ml	213330
CD-Chex Plus CD4 Low	2 x 2.5ml	213331
CD-Chex Plus CD4 Low	5 x 2.5ml	213332
CD-Chex Plus (Low, Normal)	2 x 2.5ml	213340
CD-Chex Plus (Low, Normal)	4 x 2.5ml	213341
CD-Chex Plus (Low, Normal)	10 x 2.5ml	213344
Plastic Vials		
CD-Chex Plus	2 x 3.0ml	213365
CD-Chex Plus	5 x 3.0ml	213367
CD-Chex Plus CD4 Low	2 x 3.0ml	213366
CD-Chex Plus CD4 Low	5 x 3.0ml	213368
CD-Chex Plus (Low, Normal)	4 x 3.0ml	213369
CD-Chex Plus (Low, Normal)	10 x 3.0ml	213370
<b>Control • CD-Chex® Plus BC</b>		
CD-Chex Plus BC	1 x 3.0ml	213373
CD-Chex Plus BC	2 x 3.0ml	213374
CD-Chex Plus BC CD4 Low	1 x 3.0ml	213371
CD-Chex Plus BC CD4 Low	2 x 3.0ml	213372
<b>Control • CD-Chex® CD34</b>		
CD-Chex CD34 Level 1	1 x 1.0ml	213336
CD-Chex CD34 Level 1	2 x 1.0ml	213337
CD-Chex CD34 Level 2	1 x 1.0ml	213346
CD-Chex CD34 Level 2	2 x 1.0ml	213347
CD-Chex CD34 (Level 1 & 2)	2 x 1.0ml	213338
CD-Chex CD34 (Level 1 & 2)	4 x 1.0ml	213339
CD-Chex CD34 Level 3	1 x 1.0ml	213382
CD-Chex CD34 Level 3	2 x 1.0ml	213383

800.843.0912  
www.streck.com



Clinical Laboratory Products You Can Count On.